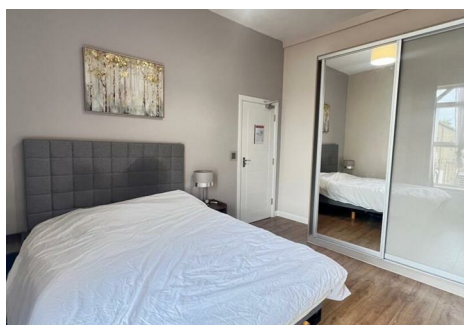


est 1979

 Jeremy
Leaf & Co.



Ballards Lane, North Finchley

£1,150 Per Month

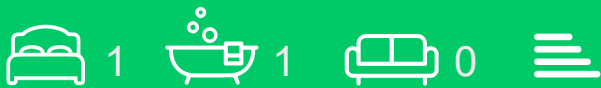
- Double bedroom
- Own En-suite shower room
- Shared Reception
- Furnished
- Shared kitchen
- Communal Outdoor Area
- 0.6 miles from West Finchley Tube (Northern Line)
- Bills Included

863 High Road, London, N12 8PT
020 8446 4295

property@jeremyleaf.co.uk
<https://www.jeremyleaf.co.uk/>

269 Ballards Lane, North Finchley, N12 8NR

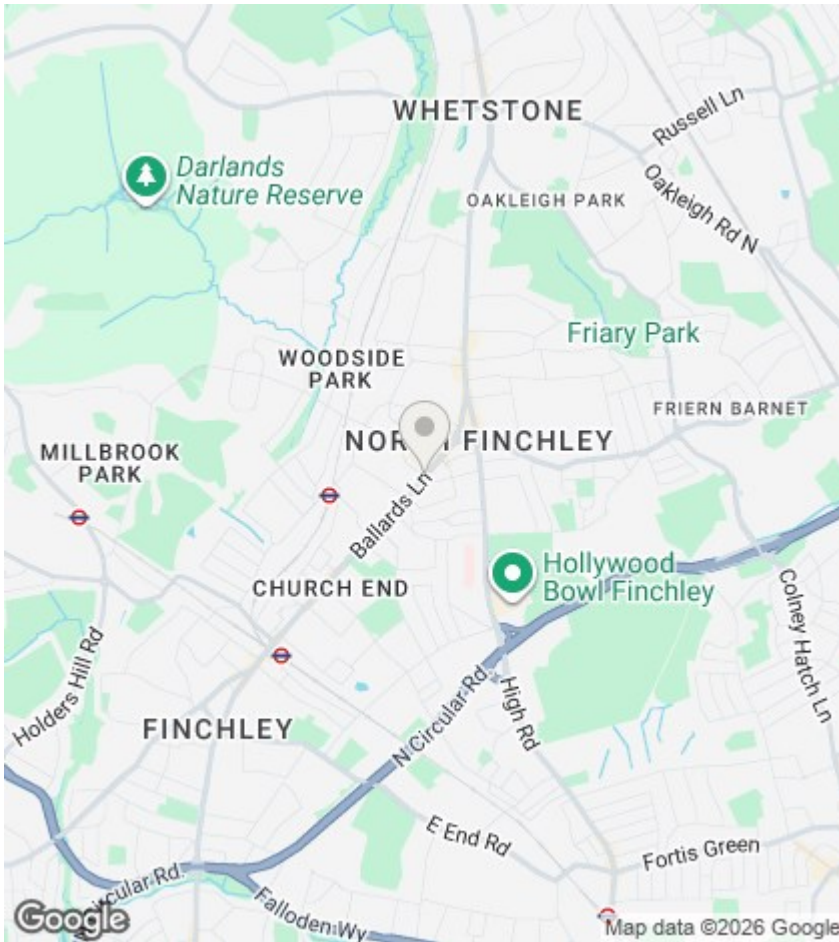
This well-appointed double room with private en-suite bathroom is designed with comfort and convenience in mind, featuring a dedicated work area, built-in wardrobes and its own wal-mounted TV. Further benefits include a shared kitchen and communal outdoor space. All bills are included, including Council Tax, and there is a weekly cleaning service for the shared spaces. The property is just 0.6 miles from West Finchley Tube (Northern Line) station and less than 100 metres from Waitrose supermarket. Viewing recommended!



Council Tax Band: D







Directions

Viewings

Viewings by arrangement only. Call 020 8446 4295 to make an appointment.

EPC Rating:

Energy Efficiency Rating		
	Current	Potential
Very energy efficient - lower running costs		
(92 plus) A		
(81-91) B		
(69-80) C		
(55-68) D		
(39-54) E		
(21-38) F		
(1-20) G		
Not energy efficient - higher running costs		
England & Wales	EU Directive 2002/91/EC	